

TRIO™

SERIES

TYPE:

PROJECT NAME:

TRIO

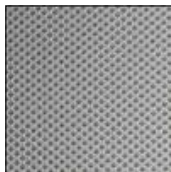
technical data

Trio is a collection of lamps with a minimal design, but packed with exclusivity. A sophisticated overlapping game, that generates an harmonious and light drawing of three petals, which has been created thanks to a careful design and formal research. An aesthetic peculiarity enhanced by the use of a hi-tech 3D fabric, with a distinct sensoriality. Available in pendant and wall versions, the Trio lamp collection is suitable for a modern, creative but also sophisticated furnishing, thanks to its wide range of colors. The entire collection uses LED sources.

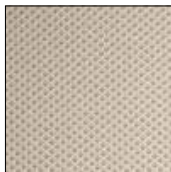


Frame: aluminum-grey and white metal.

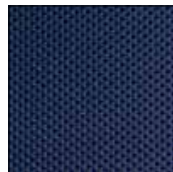
Diffuser: 3D fabric in colors: ivory, orange, grey, red and blue.
Fireproof class 1.IM.



GR: Grey



AV: Ivory



BU: Blue

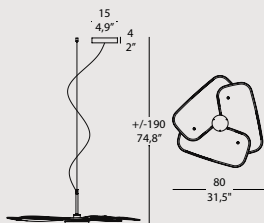


RE: Red



AR: Orange

SPECIFICATION SHEET

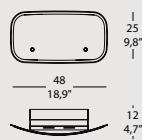


TRIO 50 80

12,5W 1530Lm 3000K Cri>80 120V



IP 20 3 ENEC



TRIO PA 50

12,4W 1640Lm 3000K Cri>80 120V



IP 20 3 ENEC

